

*It takes a lot of hard work, dedication,
time,
and yes, money, to keep
any organization running.*

*Refuge Farms is no different.
We gladly accept donations of any
size...all donations are tax deductible.*

*Donations will go to feed,
veterinarian bills, barn upkeep, &
general maintenance unless designated
for a special project or a specific
"Wish List" item.*

*When visiting THE FARM be sure to
sign our guest register or email us
your address information so you can
be eligible to receive our newsletter
and event invitations!*

Donations may be mailed to:

*Refuge Farms
PO Box 195
3035 Highway 29
Spring Valley WI 54767*

email: refugefarms@hotmail.com

*Visit us at
www.refugefarms.org*

*Please call 715-772-3379
to schedule an appointment
or email THE FARM at
refugefarms@hotmail.com for a visit*

**Experience the
Magic of**

Refuge Farms

home of

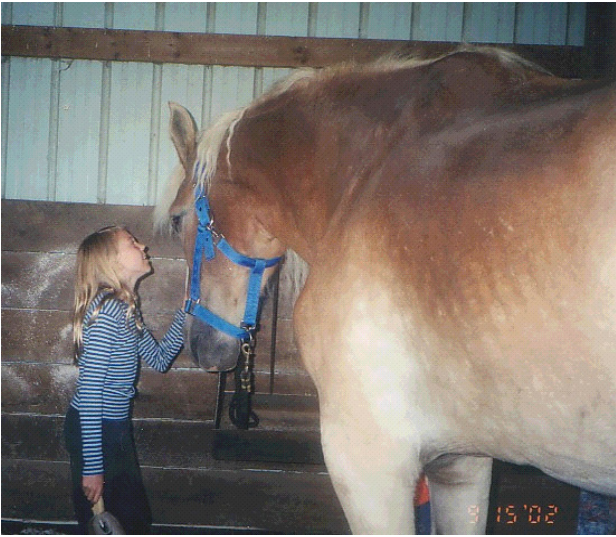
**"Horses
Helping..."**



Where Healing Horses Help

Human Beings Heal

www.refugefarms.org



Refuge Farms is a 501(c)(3) non-profit and a sanctuary for horses and Human Beings alike. We have two important missions. First, we rescue abandoned & mistreated horses and give them a safe haven to heal and live out their remaining days with dignity and grace and free of cruelty and abuse.

Then, we use these recovering horses as examples to we Humans to teach us about respect, trust, and forgiveness. Through a program called "*Horses Helping...*" the animals help us recover from stress, abuse, loss, our

physical changes or disabilities, and even the worries of everyday life.

We call this the

Magic of

"Horses Helping..."

Using this *Magic*, the horses have the ability to teach us about trust, patience, & tolerance and pass

on to us their renewed desire to enjoy life and live it to its fullest!



Refuge Farms is intended for people of all abilities, of all ages, & with all levels of horse experience.

A guest may choose to help care for their favorite horse — assisting with brushing, bathing, & feeding. Most of all, the guest bonds with their chosen horse and they begin experiencing the *Magic* and moving down the road of a special bond together!

THE FARM also has facilities for picnics, bonfires, and yard space for gatherings and meetings . . . or for just sitting and taking in the view! Consider us for your next outing or event!



Remember! Admission is always FREE at
THE FARM !